

LAMVIN INC.

ACOUSTICAL PRODUCTS

[HOME](#)
[PRODUCTS](#)
[MOUNTINGS](#)
[CONTACT](#)
[LINKS](#)
[LISTEN TO THE QUIET](#)
[Print this page](#)

Sonic Series
Phone: 800-446-6329

::Hanging Acoustical Baffle

Hanging baffle design is used to aid in absorption of reverberating sound in large, open areas.

Lamvin's standard panel construction:

Fabric Color selector:

[\[click here to open in pdf format\]](#)

Acoustical Core:

Two layers of 6-7lb. density, rigid fiberglass available in standard, tackable high-impact and ultra high-impact faces described in the Sonic Series.

Edges:

Chemically hardened edges to reinforce panel perimeter against warping and damage (aluminum edge available).

Finish:

Acoustically transparent 100% woven polyester, 66 inches wide, 2-ply, 16 ounce fabric. The fabric is bonded directly to the panel face with all edges wrapped a minimum of 1-1/2 inches to the back of panel to ensure a flat, wrinkle-free surface with tailored corners. Specified and other fabrics and perforated vinyls are available.

Size and thickness:

Thickness	1", 1-1/2", 2" (Custom thickness available)
Width	Up to 48"
Height	Up to 120"

Sabins: 12.0 based on 24" x 48" baffle

Edge details available:



Bevel



Radius



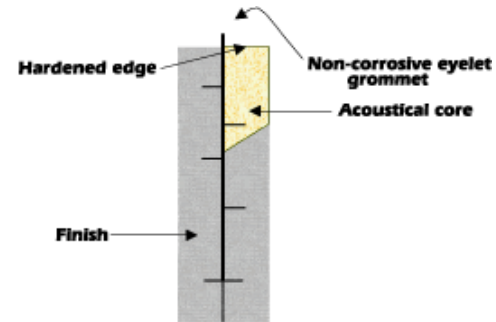
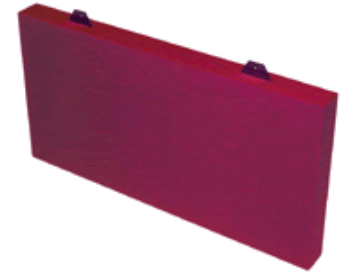
Mitered



Pencil radius



Square



Fire test:

ASTM E 84

Class I (or A) flame spread rating (tunnel test)

UBC Standard 8-2

(corner burn test)

Mountings available:

Non-corrosive metal eyelets are bonded to the hanging baffle core to provide easy attachment to cable or chain.